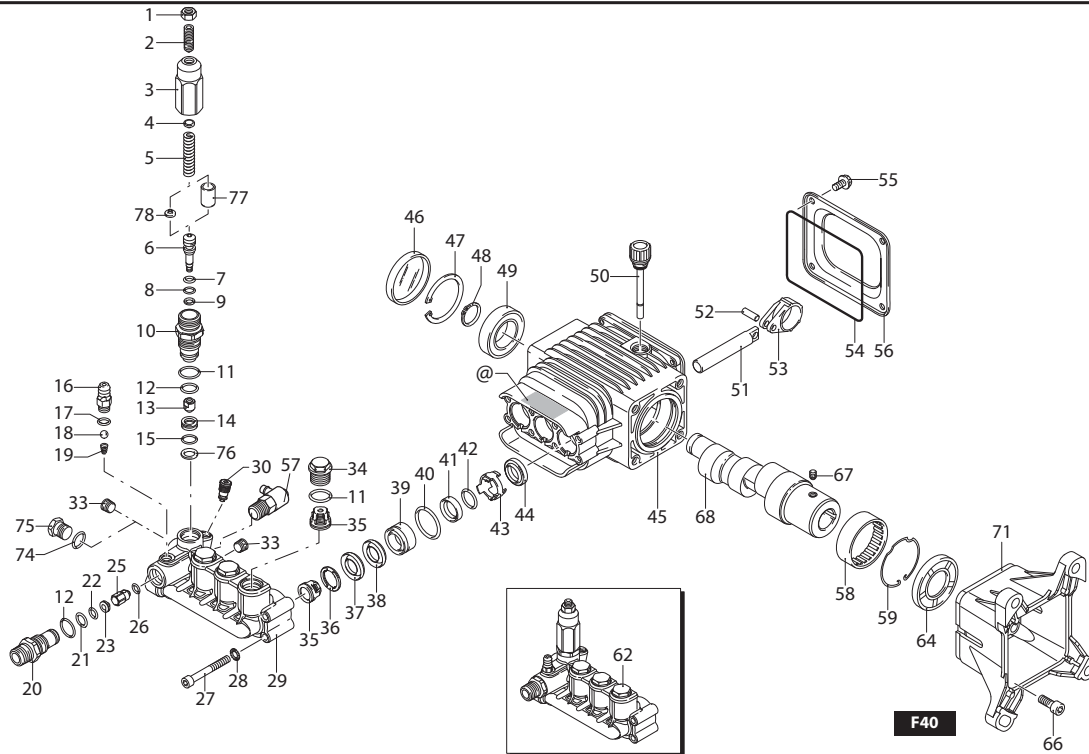
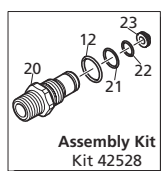
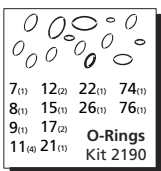
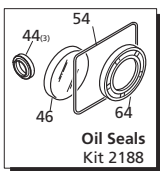
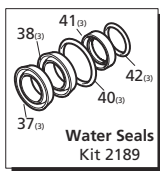
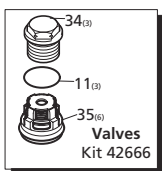


1" SHAFT



Repair Kits



Pos	Code	Description	Qty	Pos	Code	Description	Qty	Pos	Code	Description	Qty
1	1060120	Nut M6	1	38	1981580	Ring	3	78	1980220	Spring plate	1
2	392840	Grub screw M6x16	1	39	1981570	Piston guide	3		AR64516	Oil	1
3	2760480	Insert	1	40	770260	O-Ring Ø23.52x1.78	3			<i>OIL CAPACITY - 16 OZ</i>	
4	1980220	Spring plate	1	41	1260440	Water seal	3	Special Parts / Kits			
5	2760410	Spring	1	42	640070	O-Ring Ø13.95x2.62	3				Code
6	2760400	Valve piston	1	43	2760310	Spacer	3	42304	EZ Start assembly	1	
7	2260100	O-Ring Ø6.02x2.62	1	44	1260460	Oil seal	3	2280	Unloader kit up to 3200 PSI no knob with seat	1	
8	660190	O-Ring Ø6.07x1.78	1	45	2760010	Pump body	1	42369	Unloader kit above 3200 PSI no knob with seat	1	
9	2760210	Ring	1	46	1266740	Oil seal	1	42128	Unloader kit above 3200 PSI with knob without seat	1	
10	2760050	Piston guide	(309 in/lbs) □ 1	47	1260790	Circlip ø152	1	42129	Unloader seat for 42128	1	
	2760960	Piston guide	(309 in/lbs) ▲ ■ 1	48	1780550	Ring	1	Legend			
11	1200690	O-Ring Ø15.6x1.78	1	49	1780490	Bearing	1				Ø 15
12	394280	O-Ring Ø12.42x1.78	2	50	880130	Oil cap	1	For ▲	For □	For ○	For ■
13	2260070	By-pass jet	(18 in/lbs) 1	51	2760040	Piston	3	RSV3.5G35	RSV4G30	RSV3G30	RSV4G35
14	2760980	Seat	1	52	1780050	Piston pin	3				RSV4G40
15	770140	O-Ring Ø11.11x1.78	1	53	1780040	Con-rod Aluminum	□ 3				
16	1982520	Hose nipple	(35 in/lbs) 1	54	1780710	Con-rod Bronze	▲ ■ 3				
17	480480	O-Ring Ø4.48x1.78	1	55	2760281	O-Ring	1				
18	1250280	Ball	1	56	820190	Bolt 6x12	(212 in/lbs) 4				
19	1560520	Spring	1	57	2760110	Rear cover	1				
20	2760230	Detergent injector 3/8" G	(354 in/lbs) 1	58	TPP140-1/4A	Thermal relief valve	1				
21	2760270	O-Ring Ø12x1	1	59	1321190	Bearing	1				
22	1470210	O-Ring Ø9x1	1	62	42546	Complete pump head w/o EZ start	□ 1				
23	2760120	Injector insert	1		42527	Complete pump head EZ-start	▲ ■ 1				
25	2760130	Jet	1	64	480671	Oil seal	1				
26	2101770	O-Ring Ø4x2.5	1	66	180030	Bolt M8x20	(217 in/lbs) 4				
27	801080	Bolt M6x16	(92 in/lbs) 8	67	820440	Set screw M6x6	1				
28	1381550	Lock washer	8	68	1780340	Hollow shaft Ø1"	○ 1				
29	2761050	Head - Bare EZ-start	1		1780330	Hollow shaft Ø1"	□ 1				
	2760330	Head - Bare w/o EZ-start	1		1780920	Hollow shaft Ø1"	▲ 1				
30	42304	EZ Start Assembly	1	71	2760290	Flange F40	1				
33	2760260	Plug 1/4" G	2	74	820510	O-Ring Ø10.82x1.78	1				
34	2769054	Valve cap Machined	3	75	880581	Plug 1/4" G	1				
35	2761450	Complete valve	(442 in/lbs) 6	76	2760640	Ring	1				
36	2760220	Ring	3	77	2760970	Bushing	1				
37	1342761	Water seal	3								